



BUFFALO CAMP | AMERICAN PRAIRIE RESERVE

Reserve your site at americanprairie.org

Welcome! Buffalo Camp is located 50 miles south of Malta, Montana and four miles north of the Charles M. Russell National Wildlife Refuge. Travel is on gravel and unimproved roads. Situated close to a variety of hiking and biking opportunities, this primitive campground features 6 tent and 7 RV/camper sites.

Per night without electricity: \$10/site
Per night *with* electricity: \$15/site
Deposit fees in the "Iron Ranger."

Additional Amenities:

- Non-potable water
- Vault toilets
- Group amphitheater
- Shade/cooking pavilions
- Picnic tables and fire rings
- Low-impact tent platforms with tie-downs
- Informational kiosk
- Open year-round

For questions and group stays, please contact us at mail@americanprairie.org or **877-273-1123**. There are 2 tent and 2 camper sites available on a first-come, first-served basis. Remaining sites may be reserved in advance using our online reservation system.

**Please note that there is limited cell phone coverage in or around Buffalo Camp and across the Reserve region. Find more safety and travel information on our website.*

CAMPGROUND RULES

1. Campground is a **NO SHOOTING AREA**.
2. **Pack it in, pack it out.**
3. **Maximum stay is 7 days.**
4. **Quiet hours are 9PM to 7AM.**
5. **Generator hours are 11AM to 2PM ONLY.**
6. **Do not approach or feed wildlife or bison.**
7. **Vehicles must stay on designated roads.**
8. **Respect your neighbors.**
9. **Fires only allowed in provided fire rings.**
10. **Wood gathering allowed; no cutting of standing trees.**
11. **No fireworks allowed.**
12. **Do NOT hang or clean wild game from camp facilities.**
13. **Do NOT wash or clean vehicles in campground.**

WHAT'S NEARBY?

Prairie Union School - Turn left leaving the campground. This restored schoolhouse will be on your left after a short distance. Venture inside to learn about life on the prairie.

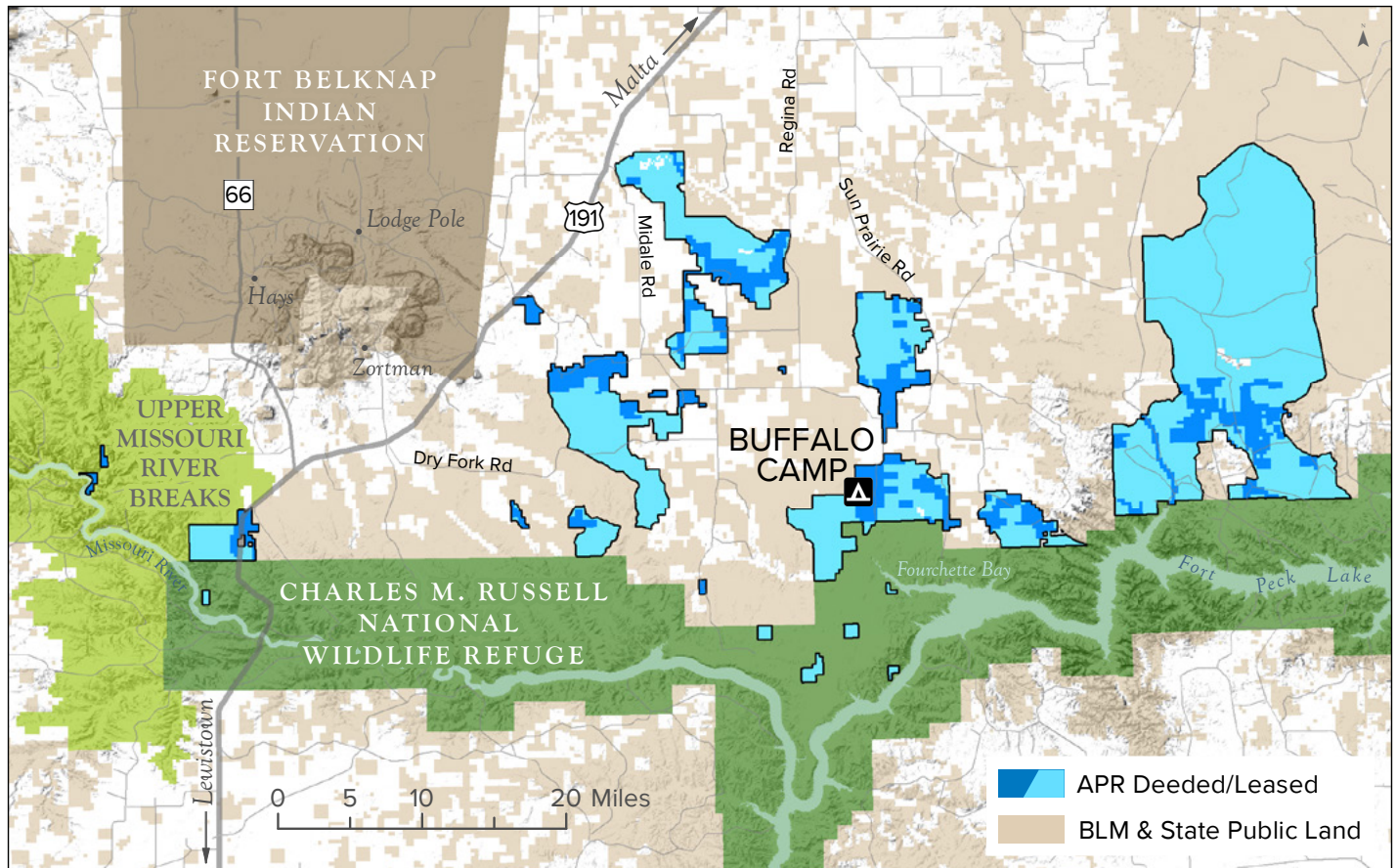
Hiking Trail - Follow signs for the trail near the amphitheater. This 1-mile round trip out-and-back takes you across a small bridge over Telegraph Creek and opens up to a view of the prairie and glacier-created geology with signs along the way.

Prairie Dog Town - Access the town from the hiking trail, this town has grown dramatically in the last few years after an outbreak of plague that threatened many towns across the region. Be on the look out for visitors of the town, like badgers, coyotes, and hawks. Burrowing owls can also be found on the outskirts, recognized by their underground nesting, reddish color and small stature.

Prescribed Burn Site - Also accessed from the trail, this prescribed burn took place in Fall 2012 to help regenerate native plants. The nearby prairie dog town benefits from the new plant growth, and bison are often found grazing here.

Geocaching - Learn more at americanprairie.org/geocaching

TRAVELING TO THE RESERVE



Driving Times: Billings - 4 hours; Bozeman - 5.5 hours; Great Falls - 4 hours; Lewistown - 3 hours; Malta - 1 hour; Missoula - 8 hours

Driving from Malta: Head south out on Central Avenue. After crossing the canal and passing 12th Street, turn left onto Highway 364 (*it is unmarked*). If you pass Joe's In & Out on your right you have gone too far. In 3.8 miles the road will turn to gravel. In less than 0.1 mile, you will come to a fork in the road. Bear right at the Y in the road to take Regina Road. Continue for 30.6 miles to a T-intersection. Turn left. In one mile, you will pass First Creek Hall and a waste transfer station on your left. Continue for 5.8 miles until you reach a bend in the road. Turn right and travel 5.6 miles to arrive at Buffalo Camp, following signs along the way.

Train: Amtrak stops are located in Malta and Glasgow, but vehicle rental services are limited to Glasgow. Neither stop has ticketing services so arrange for travel in advance.

Driving from Lewistown: Head north on Highway 191. After approximately 40 miles, the road will reach a T-intersection at "Bohemian Corner." Turn left. Continue on Hwy 191 through the Charles M. Russell National Wildlife Refuge and cross the Missouri River. You will then see Mile Marker 109 and the sign for Zortman. Turn right onto a gravel road immediately after the mile marker. At the fork, bear left onto Dry Fork Road and follow for 26 miles to a T-intersection. Turn left. After 3.5 miles the road forks. Bear right. Continue for 12.7 miles to the next bend in the road. Turn right and travel 5.6 miles to arrive at Buffalo Camp, following signs along the way.

Airports: Billings Logan International and Great Falls International are the closest commercial airports to American Prairie Reserve.

TELL US ABOUT YOUR TRIP

We'd love to hear about your experiences on the Reserve, from where you went to what plants and animals you saw during your trip. What did you discover? We also welcome your feedback and ideas so that we can improve and enhance the visitor experience over time. Please send your thoughts, comments and photos to mail@americanprairie.org and share your stories with us on **Facebook** or through our online form: americanprairie.org/share-your-story.